

CABLE LOCATOR AND ACOUSTIC FAULT DETECTOR SUCCESS ATG-435.15E

Application:

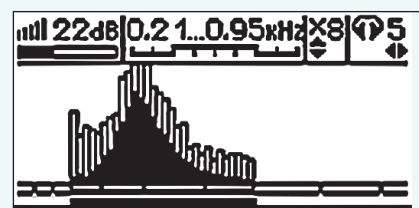
- Acoustic location of cable faults with high-voltage surge transmitter (not supplied) in underground power cables
- Detection of cable faults (breakage) up to 3 meters depth
- Location of metal cables & pipes at depth up to 6 meters
- Location of underground utilities at distance up to 3 kilometers
- Portable transmitter with 20W of power to locate almost any pipe or cable below ground surface



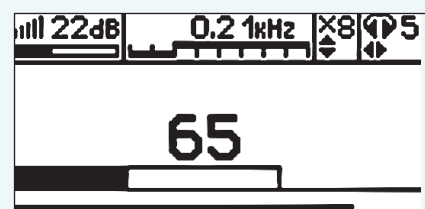
SPECIFICATIONS	
RECEIVER (AP-027)	
FAULT LOCATION	
Type of accepted signal	Continuous /pulse
Leak detection depth	Up to 3 meters
Frequencies of the receiver's filter	Central frequency of quasi- resonant filter 50 to 60 Hz, 100 to 450 Hz through 50 Hz, 120 to 540 Hz through 60 Hz, 512 Hz / 1024 Hz / 8192 Hz/ 33kHz
«Broadband» (operating mode)	0,05 to 8,6 kHz
Gain factor	100 dB
Visual indication	<ul style="list-style-type: none"> • Liquid-crystal display-symbols and meaning of the chosen modes and parameters. • Animated (moving) scale of the output signal level • Digital value and animated (moving) scale of the output signal level • Graphic (moving diagram) of the output signal level - frequency content of the output signal level • Digital and graphic display of output signal levels kept in the «memory»
Sound indication	<ul style="list-style-type: none"> • Headphones natural broadband or filtered signal • Headphones-synthesized sound. Frequency modulation • Built-in emitter - synthesized sound. Frequency modulation
Supply	Voltage 4 to 7 V. - alkaline batteries AA type 1,5 V (4 pcs.)
Time of continuous operation not less than	20 hours
Operation temperature	-20°C to +50°C
Ingress protection rating	IP54
Receiver AP-027 dimensions	220 × 102 × 42 (mm)
Weight of the electronic unit	0,46 kg

BASIC SET
- Receiver
- Acoustic sensor (Ground microphone)
- Set of extension rods for sand and snow
- Extension carrying handle
- Signal transmitter
- Connection leads, grounding accessories
- 4 AA batteries
- 8 pcs type C batteries
- Electromagnetic sensor
- Headphones
- User manual in English
- Carrying bags

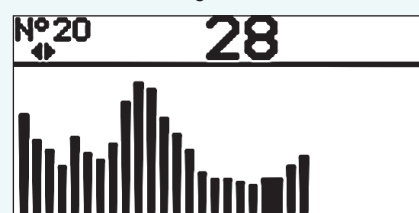
OPTIONAL ACCESSORIES
- 4 AA accumulators with charger
- Type C accumulators with charger
- Cable fault location sensors



Signal specter analysis with digital filtering



Signal strength indication for easy leakage location



Memory screen for signal level comparison