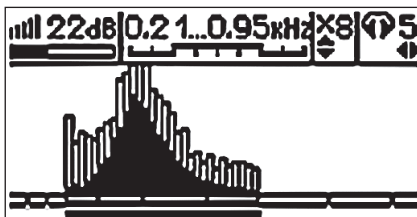


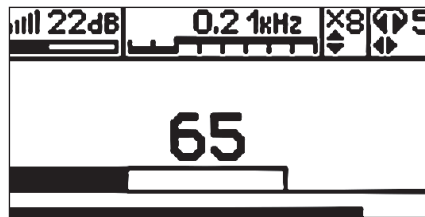
CABLE LOCATOR AND ACOUSTIC FAULT DETECTOR SUCCESS ATP-434E

Application:

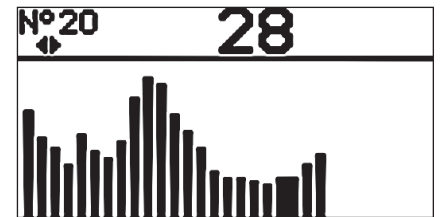
- Acoustic location of cable faults with high-voltage surge transmitter (not supplied) in underground power cables
- Detection of cable faults (breakage) up to 3 meters depth
- Location of energized power cable 50(60)Hz at depth up to 6 meters



Signal specter analysis with digital filtering



Signal strength indication for easy leakage location



Memory screen for signal level comparison

SPECIFICATIONS

Receiver (AP-027)

FAULT LOCATION

Type of accepted signal	Continuous / pulse
Leak detection depth	Up to 3 meters
Frequencies of the receiver's filter	Central frequency of quasi- resonant filter 50 to 60 Hz, 100 to 450 Hz through 50 Hz, 120 to 540 Hz through 60 Hz, 512 Hz / 1024 Hz / 8192 Hz / 33kHz
«Broadband», (operating mode)	0,05 to 8,6 kHz
Gain factor	100 dB
Visual indication	<ul style="list-style-type: none"> • Liquid-crystal display-symbols and meaning of the chosen modes and parameters • Animated (moving) scale of the output signal level • Digital value and animated (moving) scale of the output signal level • Graphic (moving diagram) of the output signal level - frequency content of the output signal level • Digital and graphic display of output signal levels kept in the «memory»
Sound indication	<ul style="list-style-type: none"> • Headphones natural broadband or filtered signal • Headphones-synthesized sound. Frequency modulation • Built-in emitter - synthesized sound. Frequency modulation
Supply	Voltage 4 to 7 V. - alkaline batteries AA type 1,5 V (4 pcs.)
Time of continuous operation not less than	20 hours
Operation temperature	-20°C to +50°C
Ingress protection rating	IP54
Dimensions	220 × 102 × 42 (mm)
Weight of the electronic unit	0,46 kg

CABLE LOCATION

Cable & pipe detection depth	Up to 6 meters
Frequencies of the receiver	50..60 Hz, 100 to 450 Hz through 50 Hz, 120 to 540 Hz through 60 Hz, 512 Hz / 1024 Hz / 8192 Hz / 33kHz
Gain	100 dB
Cable & pipe detection accuracy	±5% of utility depth

BASIC SET

Receiver
Acoustic sensor (Ground microphone)
Set of extension rods for sand and snow
4 AA batteries
Extension carrying handle
Electromagnetic sensor
Headphones
User manual in English
Carrying bags

OPTIONAL ACCESSORIES

4 AA accumulators with charger
Cable fault location sensors