

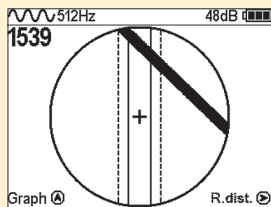
CABLE & PIPE LOCATOR SUCCESS AG-309.15G

Application

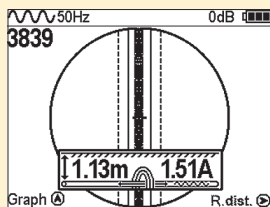
- Detection of cable & pipes on depth up to 10 meters
- Location of underground utilities at distance up to 3 kilometers
- Cable & pipe tracing with measurement of burial depth and current rate
- Portable transmitter with 20W of power to locate almost any pipe or cable below ground surface
- GIS mapping of located cables & pipes with supplied software and built-in GPS module
- Electromagnetic PVC pipe location mode



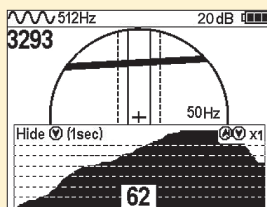
Features:



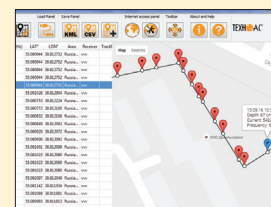
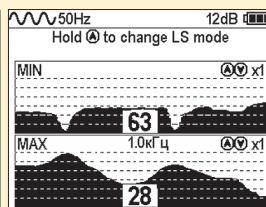
Indication of underground utility on the screen



Automatic depth and current rate measurement



Multiple modes for advanced applications (fault location, pin-pointing etc.)



GIS software for processing of acquired GPS data

SPECIFICATIONS

RECEIVER (AP-019.3)

Maximum measured depth	9.9 meters
Depth measurement accuracy	±5%
Utility location accuracy	±5%
Supported frequencies	50(60)/ 100(120)/ 512/ 1024/ 8192 / 32768 Hz
Frequency range for "Radio" mode	8 - 40 kHz
Max. gain factor	120 dB
Dynamic range of the input signal	100 dB
Sensitivity	5 mA at 1m distance (at 33 kHz)
GPS module accuracy	±1.5 meters
Receiver memory capacity	2300 points (each point contents latitude, longitude, depth, current, date & time)
Connection to the PC	Mini-USB port
Display	LCD display, 320x240 pix., with LED backlight
Power supply	4 type C batteries \ accumulators
Operation time	20 hrs
Operating temperature	-20...+60°C
Storage temperature	-30...+60°C
Dimensions	330x140x700 mm
Weight	2,4 kg

TRANSMITTER (AG-105)

Output power	20W
Maximum output current	5 A
Maximum output voltage	40 V
Supported frequencies	512/ 1024/ 8192 / 32768 Hz
Utility connection options	Direct, Clamp, Inductive
Power supply	8 type C batteries (accumulators) \ 12V vehicle accumulator \ 220V
Operating time	10 hrs
Visual indication	2-digit LED segment indicator
Operating temperature	-30 - +60°C
IP protection rate	IP65
Dimensions	216x180x105mm
Weight	2
Warranty	1 year



BASIC SET

- Locator
- Signal transmitter
- Connection leads, grounding accessories
- 12 pcs type C batteries
- User manual in English
- Carrying bags
- 12V vehicle accumulator power cable

OPTIONAL ACCESSORIES

- A-frame sensor
- Inductive clamp 50-125 mm
- 12 pcs Type C Accumulators with charger
- PVC pipe location accessory set